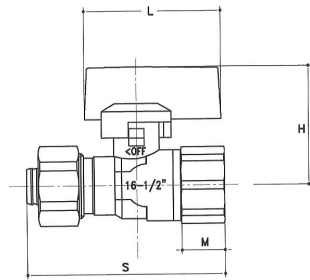




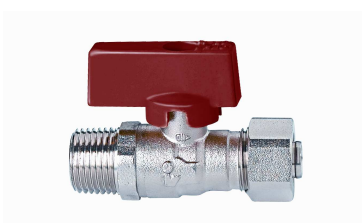
Valvola a sfera in ottone attacchi a compressione per tubo "**multistrato**" – 1/2" F

Compression Brass ball valve "**multistrato**" pipe connection – 1/2" F



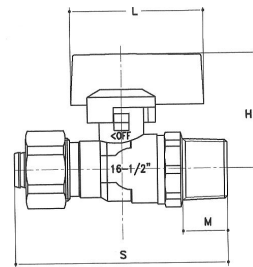
DN	ØP	S	H	L	M	Peso gr Weight gr	Conf. Box
1/2"F-16x2	10	65	38.5	45	15	155	---

220P



Valvola a sfera in ottone attacchi a compressione per tubo "**multistrato**" – 1/2" M

Compression Brass ball valve "**multistrato**" pipe connection – 1/2" M



DN	ØP	S	H	L	M	Peso gr Weight gr	Conf. Box
1/2"M-16x2	10	71	38.5	45	15	165	---

222P



Valvola a sfera in ottone attacchi a compressione per tubo "**multistrato**"

Compression Brass ball valve "**multistrato**" pipe connection

DN	ØP	S	H	L	M	Peso gr Weight gr	Conf. Box
16x2-16x2	10	78	38.5	45	15	200	---

220PP